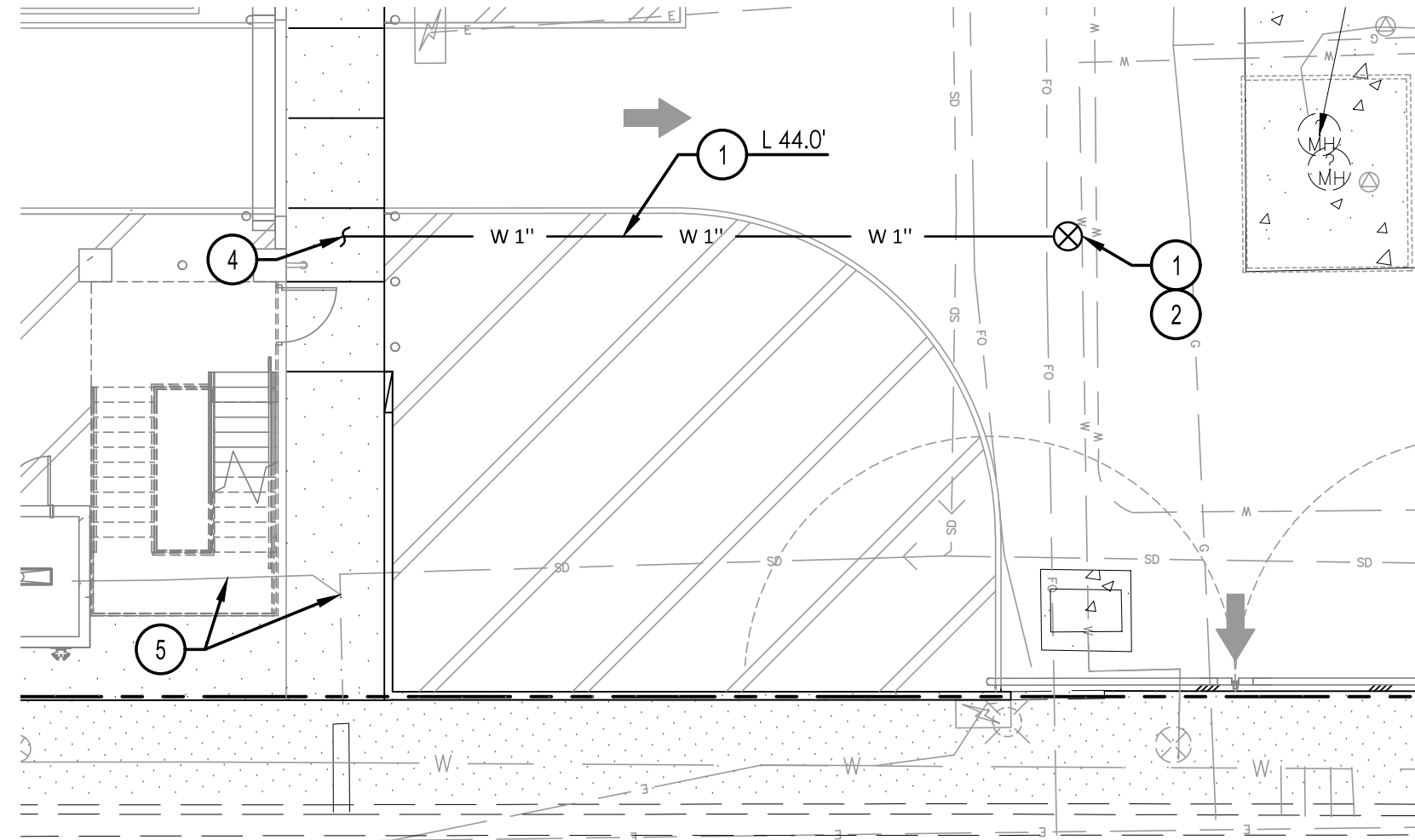


UTILITY KEYNOTES

- CONTRACTOR TO LOCATE THE EXIST. 3" WATERLINE, CUT AND INSTALL A NEW 3"x1" TEE
- INSTALL NEW 1" BALL VALVE CURB STOP WITH VALVE, BOX AND COVER PER MAG STD DTL 391-2
- INSTALL NEW 1" TYPE 'K' COPPER PIPE, 36" MIN COVER, LENGTH PER PLAN
- CONNECT 1" WATER LINE TO BUILDING PLUMBING CONTRACTOR TO LOCATE EXIST. STORM DRAIN LINE AND CAP LINE RUNNING TO THE WEST BELOW GRADE AT THE WYE CONNECTION. THE LINE RUNNING EAST IS TO REMAIN IN PLACE AND IN OPERATION



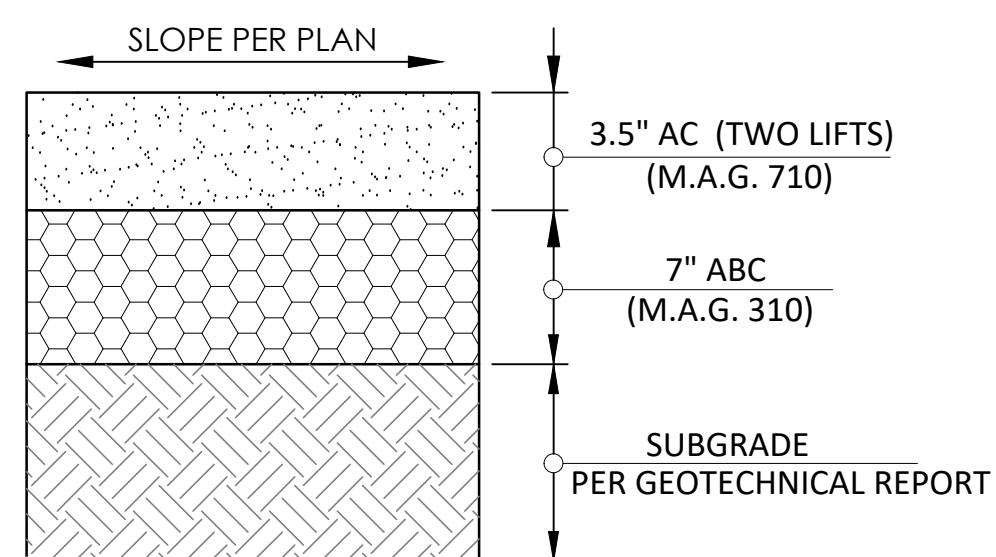
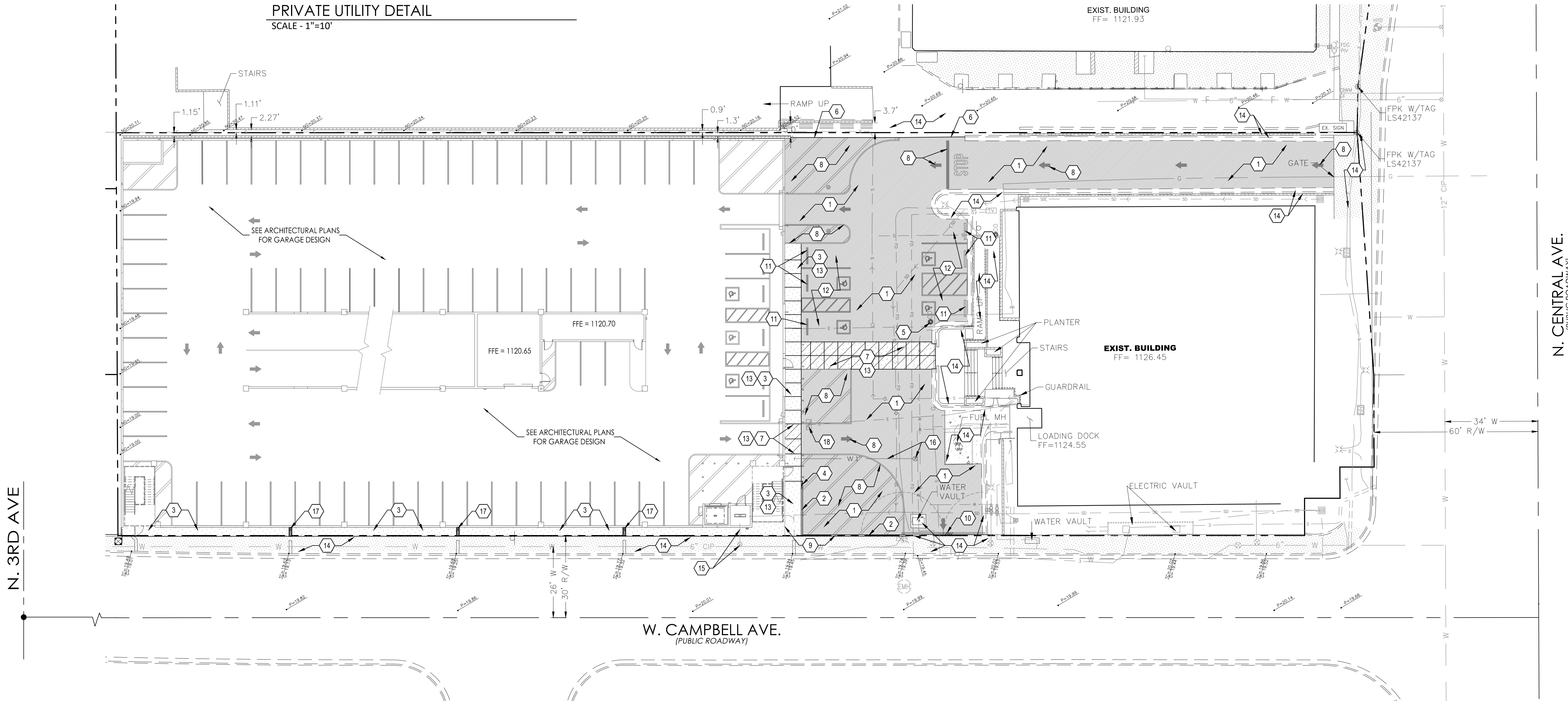
PRIVATE UTILITY DETAIL
SCALE - 1"=10'

PAVING LEGEND

- INSTALL ASPHALT PAVEMENT (3.5" ASPHALT OVER 7" ABC) OVER PREPARED SUBGRADE PER GEOTECHNICAL REPORT.
- INSTALL CONCRETE SIDEWALK PER MAG STD DTL 230
- INSTALL CONCRETE SECTION (7.5" PCC) OVER PREPARED SUBGRADE PER GEOTECHNICAL REPORT.

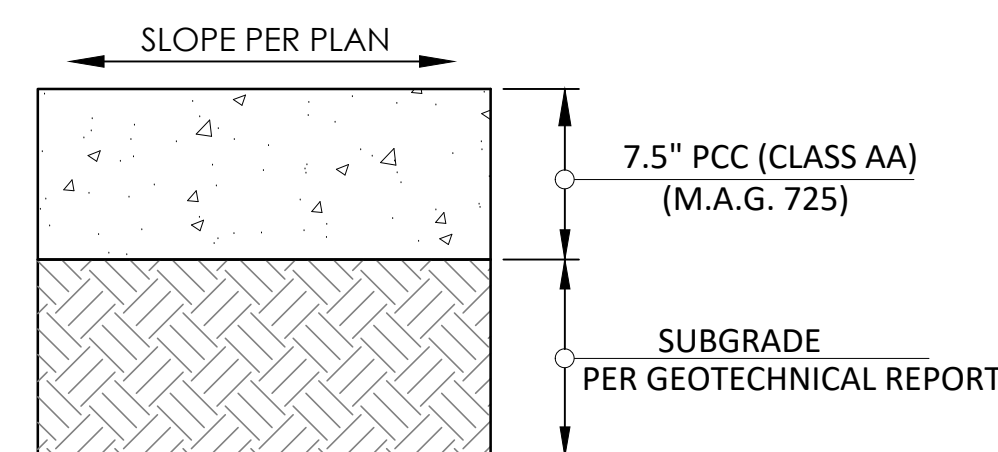
PAVING CONSTRUCTION NOTES

- INSTALL ASPHALT PAVEMENT (3.5" ASPHALT OVER 7" ABC) OVER PREPARED SUBGRADE PER GEOTECHNICAL REPORT. SEE DTL #1 THIS SHT
- INSTALL SINGLE CURB PER MAG STD DTL 222, TYPE B
- INSTALL CONCRETE SIDEWALK PER MAG STD DTL 230
- INSTALL TYPICAL CURB TERMINATION PER MAG STD DTL 222
- ADJUST EXIST SEWER CLEANOUT FRAME AND COVER PER MAG STD DTL 441
- INSTALL ASPHALT PAVEMENT EDGE, TYPE 'A' PER MAG STD DTL 201
- INSTALL CLASS AA CONCRETE PAVEMENT (7.5" PCCP) OVER PREPARED SUBGRADE PER GEOTECHNICAL REPORT. SEE DTL #2 THIS SHT
- INSTALL NEW PAVEMENT STRIPING AND SYMBOLS PER ARCHITECTURAL DETAILS AND SPECIFICATIONS. TYPICAL FOR ALL SITE STRIPING
- INSTALL NEW SCREEN FENCE PER ARCHITECTURAL DETAILS
- INSTALL NEW SWINGING GATE PER ARCHITECTURAL DETAILS
- INSTALL NEW CONCRETE SAFETY CURB PER ARCHITECTURAL DETAILS
- INSTALL ADA STRIPING PER ARCHITECTURAL DETAILS AND SPECIFICATIONS
- ADA PATH, VERIFY ALL SLOPES ARE COMPLIANT BEFORE CONCRETE POURS
- EXISTING IMPROVEMENTS, PROTECT IN PLACE
- NEW FIRE LINE PER FIRE LINE PLAN, A SEPARATE PERMIT
- NEW WATERLINE PER PRIVATE UTILITY DTL THIS SHT
- NEW SCUPPER PER GRADING PLAN
- ADJUST EXIST ELECTRICAL BOX TO FINISHED GRADE

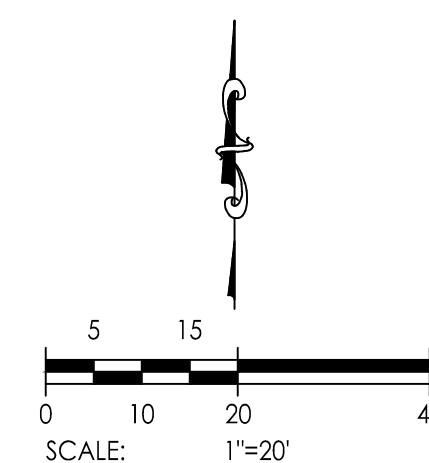


1 ASPHALT SECTION (3.5"/7")
N.T.S.

NOTE:
PAVING SECTION INFORMATION PROVIDED FOR REFERENCE ONLY. CONTRACTOR TO REVIEW "GEOTECHNICAL EXPLORATION REPORT AND ADDENDUM #2 PREPARED FOR PHOENIX UNION PARKING GARAGE AND CHASSE BUILDING TEAM BY VAN ENGINEERING INC. - PROJECT NUMBER 32693, REPORT DATED - APRIL 15TH, 2025 AND ADDENDUM #2 DATED - SEPT. 23, 2025."



2 CONCRETE SECTION (7.5")
N.T.S.



THE LOCATION OF EXISTING UNDERGROUND UTILITIES ARE SHOWN IN AN APPROXIMATE WAY ONLY. THE CONTRACTOR SHALL DETERMINE THE EXACT LOCATION OF ALL EXISTING UTILITIES BEFORE COMMENCING WORK. HE AGREES TO BE FULLY RESPONSIBLE FOR ANY AND ALL DAMAGES WHICH MIGHT BE OCCASIONED BY HIS FAILURE TO EXACTLY LOCATE AND PRESERVE ANY AND ALL UNDERGROUND UTILITIES.



DFDG Architecture
4545 E. McKinley St. Phoenix, AZ 85008
602.954.9060 www.dfdg.com



PROJECT TEAM
Owner: Phoenix Union High School District
Contractor: Chasse Building Team
Associate Architect: DFDG Architecture
Structural Engineer: Landa and Associates
Mechanical & Plumbing Engineer: Kennelly Engineering
Electrical Engineer: Bowie Tiglas Engineering
Civil Engineer: KBell Engineering

DOCUMENT COPYRIGHT 2025
ISSUE
SD Package - 07.17.25
50% - 08.26.25
Plan Submittal - 10.01.25

REVISIONS

PROJECT TITLE
4502 Parking Structure

PAVING PLAN

C102